

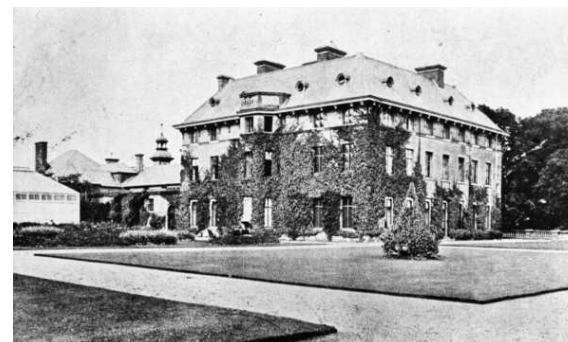
*This series of walks has been produced by Catherine Tees, Kimpton Rights of Way Committee.*

*It is our aim to keep rights of way in the Parish clear of obstructions, well marked and easy to walk. We hope that this walk will encourage you to use the paths in the Parish and explore our beautiful countryside. Please report any errors in directions, or any problems with paths to Catherine Tees, via [www.kimpton.org.uk](http://www.kimpton.org.uk) or to Hertfordshire County Council Rights of Way Section.*

August 2008

## WALKS IN KIMPTON PARISH

### WALK 4 SHORT WALK TO KIMPTON HOO



*Kimpton Hoo demolished in the 1950's*

**3.5km/2¼ml** walk with open views along footpaths and private road.

**Approx time:** 1 hour